

HSX-400

Medical Heat Sealer

TOUCH SCREEN PRECISION MEDICAL HEAT SEALER FOR PRODUCTION OF REPEATABLE HIGH QUALITY HEAT SEALS IN MEDICAL PACKAGING, VALIDATION TO ISO 11607.

PRODUCES SEALS 10MM WIDE* AND UP TO 400MM LONG.

* CUSTOM SIZES AVAILABLE

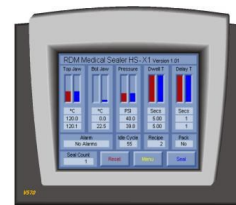


Benefits:

- Choose heat sealing bar configuration, either single (upper) or dual (upper & lower, meets ASTM F2029)
- Sealing bar can be specified to suit various surface areas or surface finishes
- Accurate and repeatable seals due to precision ground sealing faces and advanced jaw guidance system
- Versatile applications for flexible materials, porous and non-porous films, foils and blister packs
- Low Maintenance - 12 months between calibrations

Features:

- 5.7" touch screen controller for precise control of temperature, pressure and dwell time
- Memory recipe function for quick and accurate recall of settings
- Precise pressure calibration of standard surface area jaw face
- Jaws constructed in aluminium and silicone with precision ground faces
- Range of jaw face surfaces including Matched Crimp and Teflon Coating
- Auto cycle feature for greater user convenience and cycle counter



Settings screen for all control parameters



Temperature and pressure calibration screen



Specification

Models	HSX-400 SingleMed—Upper jaw temperature controlled HSX-400 DualMed—Upper & Lower jaw temperature controlled
Seal Width and Length	Standard 10mm width, custom sizes available. Length 400 mm, custom sizes available.
Controller	5.7" Touch Screen TFT LCD 320 x 240 colour display. IP56 rated. Stores up to 20 sealing recipes. Password protection. Optical pack in place sensors. Auto, touch screen or optional footswitch operation.
Temperature Control	Range: Ambient to 300°C, Accuracy: +/- 0.5%, Operating Accuracy: +/-2°C. User definable alarm for over/under set level.
Pressure	Range: 0 to 100psi (6.8bar, 689Kpa), via electronic pneumatic E/P regulator. Accuracy +/-1%. User definable alarm for over/under set level. Supply via clean and dry compressed airline or bottled air/nitrogen at 75 to 115psi
Dwell Time	Range: 0.1 to 99.9 sec., Resolution 0.1 sec
Auto Cycle & Delay Time	Delay Time Range: 0.1 to 99.9 sec Auto Cycle incorporates 'Pack-in-place' sensors for automatic cycling of sealing bars used in manual production environments, and assists with correct alignment of sample.
Jaw Guidance System	Advanced jaw guidance system guarantees even closure, resulting in consistently high quality seals.
Pre-Heat Cycle	User definable variable time interval, electronic processor controlled.
Cycle Counter	Electronic counter for seals completed.
Sealing Jaws	Standard flat jaws 10mm x 400mm, constructed in aluminium with precision ground face. Lower sealing jaw with precision ground silicone rubber face. (See options below)
Environment:	5-50°C ambient operating temperature, RH 75% max (non-condensing)
Power	240V AC 50/60 Hz (110V AC available on request)

Options

- Sealing jaw dimension/profile as required (inc. Matched crimp 120° x 1.8mm pitch)
- Teflon Coated Tape or Teflon Coated Jaws
- Vacuum and/or gas flushing of packs
- Guillotine cutter
- Integral or separate control console
- Validation documentation / service